



## UP CLOSE & PERSONAL

CONTRIBUTE TO THE RESTORATION OF  
THE AFRICAN WILDERNESS

'GO TO THE BANKS OF THE GREAT GREY-GREEN, GREASY LIMPOPO RIVER,  
ALL SET ABOUT WITH FEVER-TREES, AND FIND OUT'.

| RUDYARD KIPLING



## ■ TABLE OF CONTENTS

04	INTRODUCTION
06	WE HAVE A PLAN
08	LONG TERM MISSION, VISION, VALUES
11	INTRODUCTION TO SOUTH AFRICA
12	SOME BACKGROUND ON THE RESERVE
16	EXISTING ANIMALS ON THE RESERVE
18	INITIAL PHASE: ESTABLISHMENT OF THE RESERVE, CONTINUATION OF THE LODGE
20	SECOND PHASE: BUFFALO BREEDING
24	THIRD PHASE: SAVING THE RHINOS
26	ADDITIONAL PLANS
28	THE SHARED UNIVERSE FOUNDATION
31	STRUCTURE OF THE PROJECT: INVESTMENT FUND
34	MANAGEMENT STRUCTURE
37	OVERALL RISKS
38	CONTACT US

## ■ PREFACE

The purpose of this brochure is to inform potential investors who may wish to invest in the mutual fund Shared Universe Ventures Ltd. ("Shared Universe"). The shareholders in Shared Universe share a common vision: to preserve and restore as much as possible of Africa's nature to its former glory while at the same time preserving its endangered wildlife. Agricultural land is being regenerated to once again become prime habitat for multiple types of game and predators.

Threatened species such as rhinos will be given a safe and natural space in which to live and breed.

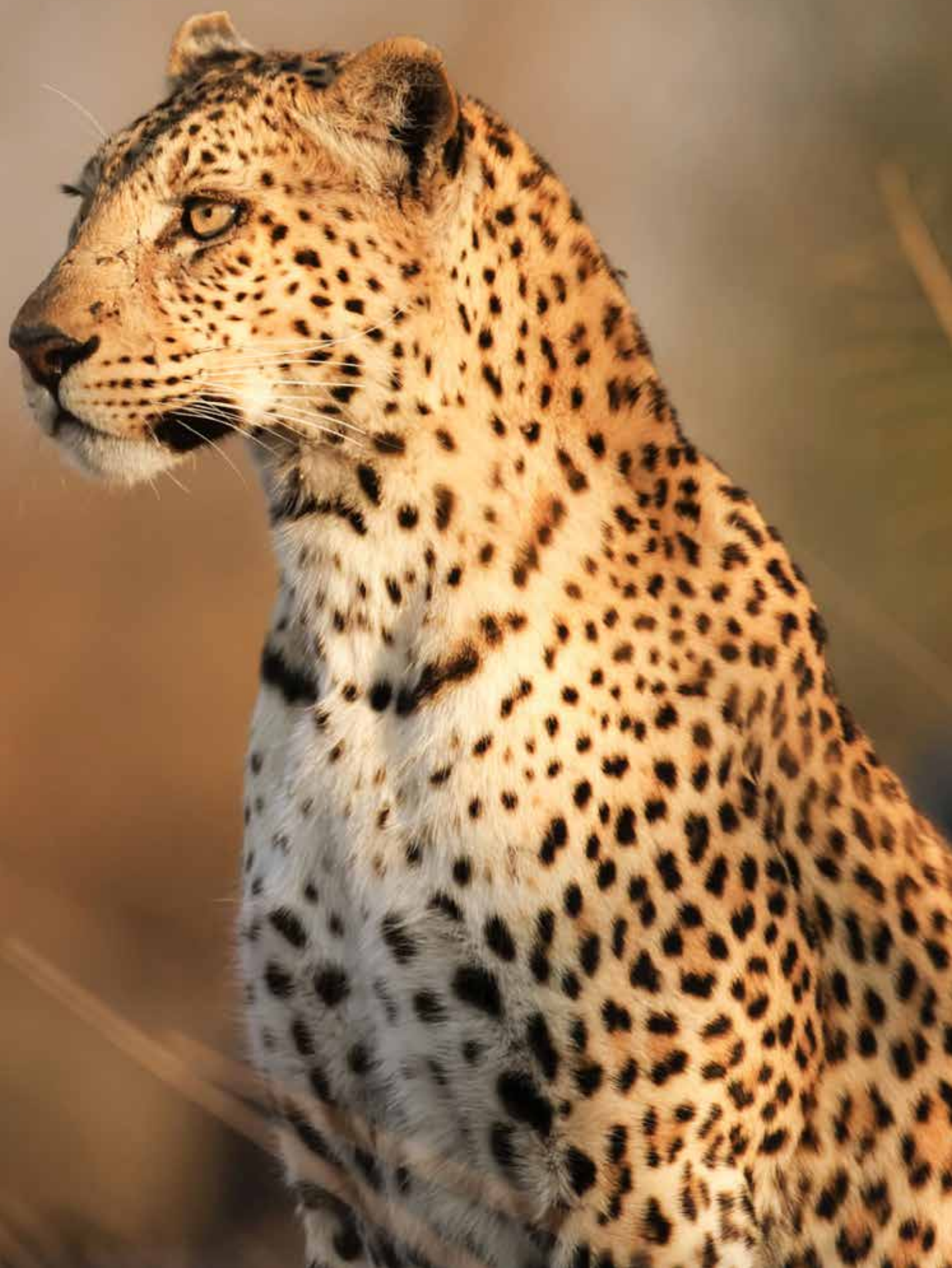
Conservation of endangered wildlife is important and costly and will have a sustainable long-term impact only if it can be combined with ways in which nature and those endangered species can 'pay for themselves' without being relegated to a zoo-like environment.

To support this, Shared Universe will promote tourism that will have an up-close and personal impact on visitors and a minimal impact on nature and animals. Shared Universe wants to reach out to as many people as possible and educate them on the values of nature and the animals in it. By creating a dedicated investment environment, it will become possible for even the smallest investors to have a real say in and impact on the development of this project.

Those who want to work 'hands-on' on a project will be encouraged to do so, by being part of environmental and behavioral studies, or by actively taking part in protecting wildlife and in restocking a unique biosphere.

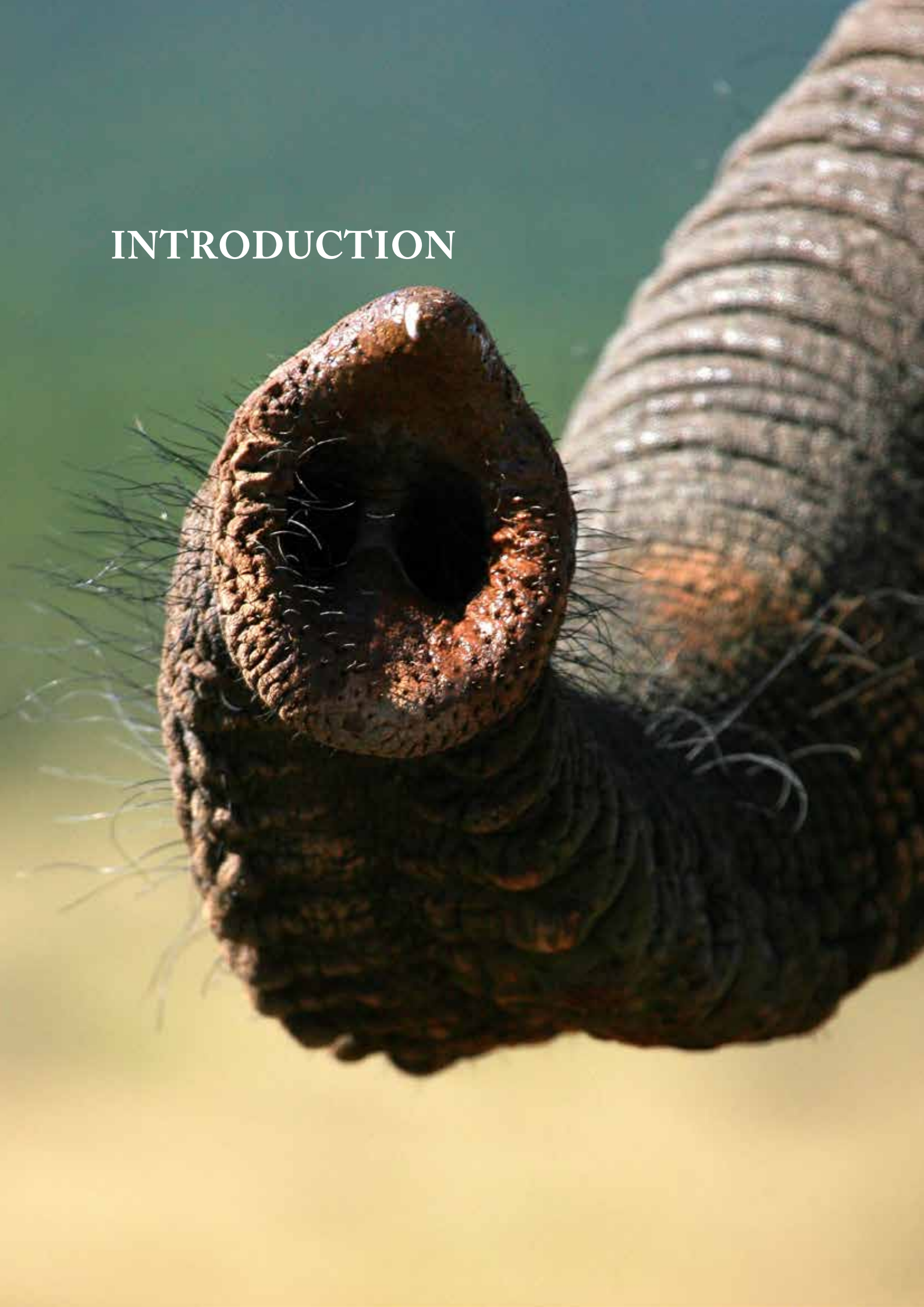
Raising money is an important step in what will certainly be a challenging, but also a rewarding, adventure. As an African saying goes:

**"HE WHO TRAVELS ALONE WILL TRAVEL FASTER, HE WHO TRAVELS TOGETHER WILL TRAVEL FURTHER"**





# INTRODUCTION



**Shared Universe Ventures Ltd.**, is a listed investment fund whose purpose it is to fund and operate the Mapesu Private Game Reserve (Pty) Ltd. ("Mapesu") in the Limpopo Valley in South Africa. The reserve is part of the Limpopo Valley Conservancy and borders the Mapungubwe National Park, a UNESCO World Heritage Site.

At 7,221ha (72 km<sup>2</sup>), the reserve is comprised of the Kilsyth, Sardinia, Breslau, and Altenburg farms, which together form the Horison and Nekeel farms. The area has a tremendous amount of biodiversity, thanks largely to its varied habitat. Mapesu is situated within the Mopane veld dominated by *Colophospermum mopane* (commonly called the mopane tree, butterfly tree or turpentine tree) on the Archaean Beit Bridge complex. The farm consists of undulating plains with a number of drainage lines and some hills (Limpopo Ridge Bushveld) in the East and South.

On the nearby Machete farm, some 10km from Mapesu, there is a large rock shelter (Kaoxa's Shelter) with spectacularly preserved Koi San rock art, much of it dating back some 2,000 years. The site depicts animals such as sacred eland as well as kudu, giraffe, wildebeest, rhinoceros, impala, hyena and rare locusts, and also many human forms. Khoi San Rock art is not merely a record of what Bushmen witnessed on the landscape before being pushed to its margins first by Bantus and later by European settlers; it is rather a commentary on the spiritual experiences of their shamans, and it forms an integral part of their religious beliefs. Even today, rock art has a powerful impact on many of the people who come to experience it and make an effort to understand the fundamentals of it. On Mapesu there are also several manifestations of Koi San rock art, including on the ridge leading to the lodge.

Previously, cattle farming has led to overgrazing and subsequent encroachment of mopane trees. We are striving to return the area to its natural state. We do that by (manually) cutting about 100 hectares of mopane trees per month and restoring the area to its original state, producing some charcoal in the process. Ours is a long-term strategy where we will not sacrifice nature for convenience; it will take sweat, effort and a lot of time to restore this piece of Africa to its former glory.

Between 2012 and 2017 over 1,000 rhinoceros were poached in South Africa each year. The large-scale poaching of rhinos in South Africa has prompted many private rhino owners to sell their animals for fear of them being poached. It has simply become too dangerous, and protecting the rhinos from poachers has become too expensive for smaller farmers. We intend to provide a safe and nurturing area for rhinos.

We are creating change now, so future generations regardless of where they live, may have the opportunity to experience the same plentiful and diverse planet that we benefit from and enjoy today. You can make a difference, save the planet and make your involvement an exciting one! Shareholders in Shared Universe Fund can also see the reserve as a home away from home in the African wilderness. It offers them a chance to re-connect with nature.

Owning shares entitles shareholders to visit the reserve whenever they like, enjoy its facilities, including its luxury lodge, which is currently a four-star facility, and to get involved in conservation and community projects at their discretion. Our shareholders enjoy the enormous personal satisfaction and ongoing joy from their investment without having to deal with the complexities and costs of personally managing a game reserve. They can be proud to leave a legacy of magnitude and true nature conservation for future generations.

## ■ WE HAVE A PLAN

The plan is being adjusted as time and insights progress and based on input from all our shareholders. The plan is as follows:

- An investment fund was created in April of 2014: Shared Universe Ventures Ltd., a BVI Business Company, hereinafter the “Fund.” The Fund is raising capital in US dollars, both outside and inside South Africa. In its first three years of operations, the Fund has raised approximately USD 4.5 million.
- The Fund has invested significantly all of the proceeds raised in the shares of a South African Company, Mapesu Private Game Reserve (Pty) Ltd., (hereinafter “Mapesu”, the “conservancy” or the “reserve”), which was incorporated in April 2014, and has purchased several properties on which the project is being developed. This land purchased contains two currently operating businesses:
- Mopane Bush Lodge (Pty). Ltd., which owns and operates a profitable, four-star tourist lodge, the Mopane Bush Lodge ([www.mopanebushlodge.co.za](http://www.mopanebushlodge.co.za)). The second business is the Mapesu Private Game Reserve.
- Under this plan, we work on the creation of a reserve for threatened species, with special focus on rhinos, all within their original habitat. We are reintroducing breeding groups of (initially only white, but later hopefully also black) rhinos to live and procreate in relative safety.
- As protecting, preserving and breeding rhinos are relatively expensive propositions, we have created a number of commercial activities around them to generate sufficient funding that will make the overall project sustainable and commercially viable. These include additional tourist activities, which included increasing the capacity of the existing Mopane Lodge from originally 8 units with 16 beds to now 19 units with 38/42 beds.





- At some future stage, there will be commercially viable educational projects, including veterinarian projects. Moreover, we already commenced a commercial animal breeding project involving a small breeding buffalo herd.
- We will organize uplifting and social study projects as well as invite well-known Asian scientists to study rhinos. The aim is to increase both local and international knowledge of the rhino and defuse the perceived medicinal value of its horn.
- In the process, we have thus far created over 50 jobs, which over the next few years will increase to over 100; train local staff in all available positions, increase tourist attractions in the Northern Limpopo area, create opportunities for corporate social responsibility by offering the “rent a charity” concept, etc.
- At the regional level, plans exist to create a larger 5,909 km<sup>2</sup> transnational conservation area, the Greater Mapungubwe Transfrontier Conservation Area (TFCA). Our reserve is located within this planned area. If such a plan materializes, Mapesu and Mopane Bush Lodge are perfectly located to benefit from increased tourism traffic as well as conservation activities. This plan, (originated in the 1940’s, the Dongola National Park and later the Limpopo-Shashe trans-frontier park), has been long in the making and is moving forward slowly, mostly as a result of the ongoing unstable political situation in Zimbabwe.
- The Mapungubwe Cultural Landscape was proclaimed a UNESCO World Heritage Site in July 2003. Peace Parks Foundation, De Beers, the National Parks Trust and the World Wide Fund for Nature South Africa (WWF-SA) assisted SANParks by facilitating negotiations with landowners and buying up farmland to consolidate the core area of South Africa’s contribution to the proposed TFCA. The 30,000 ha Mapungubwe National Park officially opened on September 24, 2004. A memorandum of understanding (MoU) regarding the TFCA’s establishment was signed on June 22, 2006, and an international coordinator was appointed. Since then, a strategic plan for the TFCA’s development has been drafted to determine a vision and mission, long-term goals, objectives, and actions.





## ■ LONG TERM MISSION, VISION, VALUES

### OUR MISSION

Our mission is to enjoy regenerating a piece of the African wilderness and work on the protection and survival of critically endangered wildlife species.

### OUR VISION

To become the highest quality conservancy in all of Africa, while offering a hands-on, up-close and personal experience to shareholders.

#### **We do that by:**

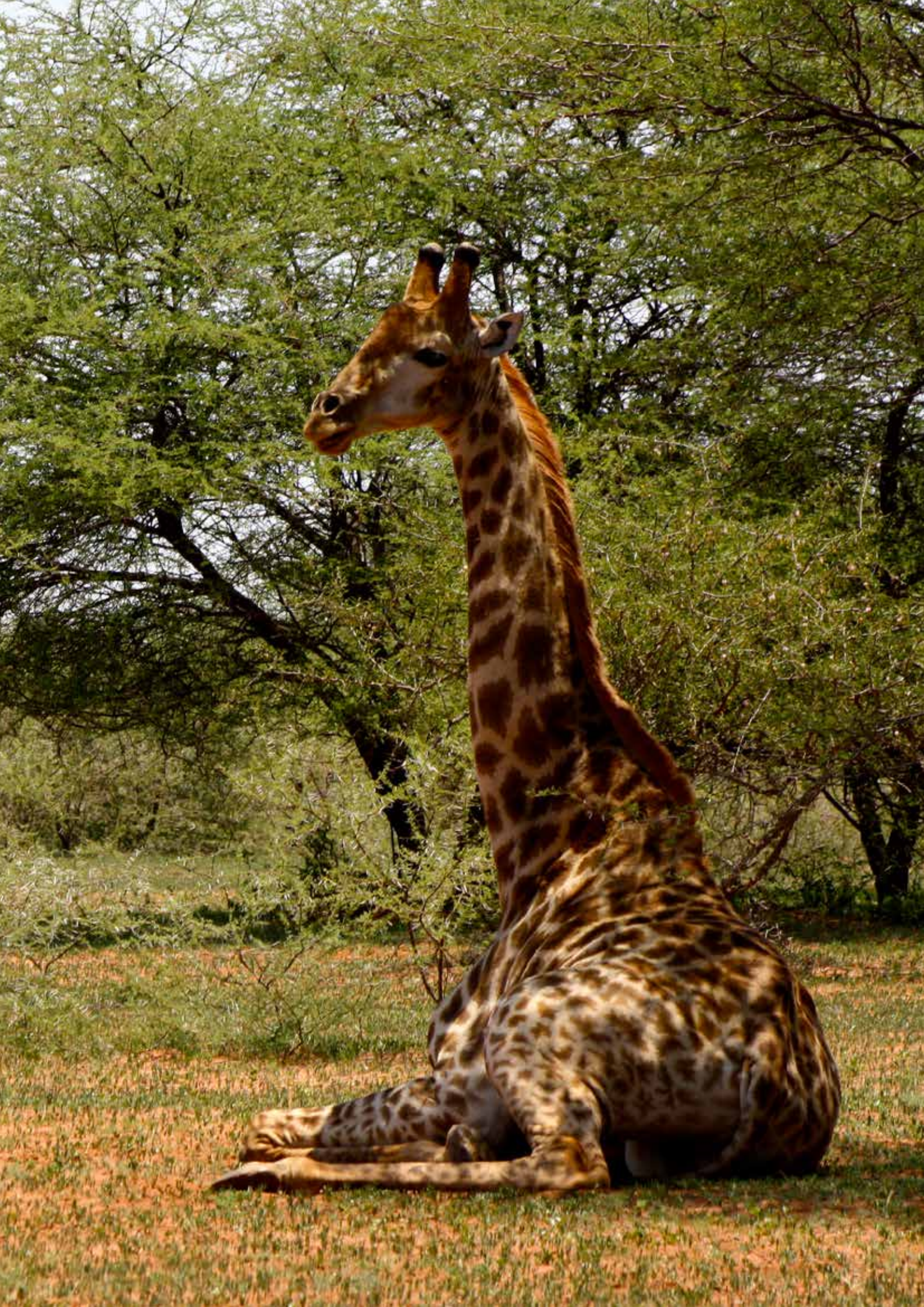
- Making sure the animals we have are taken care of as well as possible (physical health and emotional health)
- Making sure the people we employ are equally well taken care of
- Educating the public in South Africa about the need to help with conserving endangered species
- Entertaining and educating visitors about the life and the plight of rhinos and other endangered species
- Being a socially responsible business, which has a positive influence on local society as well as on the environment, by promoting 'green' and durable approaches to all business processes
- Running a sustainable business, also from a commercial point of view. The lodge and safari experience which form part of the project will be grown until they can generate enough funds to support the entire game reserve; currently, we are not that far from that goal
- Providing a sound training ground for various wildlife-related professions
- Creating and promoting a positive image of South Africa
- Supporting studies and campaigns that prove that rhino horn is not valuable for Traditional Asian Medicine (TAM). Moreover, providing studies and information to discourage its use for TAM or other purposes

#### **Our values are:**

- Integrity - we do what we say, and we say what we do
- Honesty - no participation or acceptance of any type of corruption, bribery or nepotism
- Quality - doing the best we can in all we do
- Equality - every person is equally important, every animal is equally important
- Care - treat all, man and animal, as well as we are capable of
- Fun - we need to make sure we all enjoy what we are doing and do not forget why we are doing it









## ■ INTRODUCTION TO SOUTH AFRICA

South Africa is a relatively young democracy with mostly a free-market economy and a large population (over 55 million people), and it has the second largest GDP in Africa. Mining, tourism, and farming are the largest industries, and the government is promoting investments in the tourism industry. In common with most countries, the government owns the mineral rights in South Africa and all land is subject to prospecting activity. This has already been done several times on Mapesu land, and the coal underneath the property has been determined to be of low quality and not easy to extract.

The reserve is in between two diamond mines, including the large 'Venetia' mine (operated by De Beers/ Anglo American). So far no diamonds have been discovered on our land. There is a system of compensation should commercially viable minerals be discovered, and mining be decided upon.

### WHERE ARE WE?

Mapesu is in the far north of South Africa, just 6kms from the confluence of the Limpopo and Shashe rivers, which mark the borders between South Africa, Botswana, and Zimbabwe. It is a 550km drive from Johannesburg, on good tar roads, so shareholders and visitors can make the five to six-hour trip in a standard car. Near-term plans for the reserve include an airstrip, which will make access even easier.

ATTRACTION	DISTANCE
Mapungubwe National Park - Main gate	7km
Pontdrift/Botswana border post	20km
Musina/Zimbabwe border post	65km
Kruger National Park - Pafuri gate	190km
Johannesburg International Airport	530km

## ■ SOME BACKGROUND ON THE RESERVE

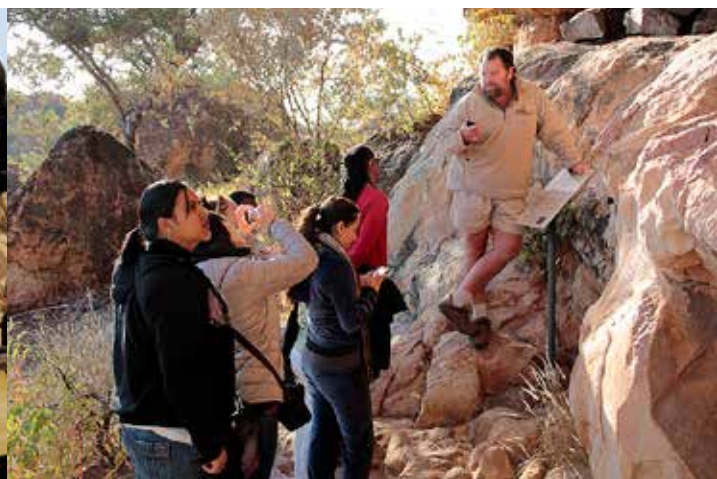
**“ONLY HE CAN UNDERSTAND WHAT A FARM IS, WHAT A COUNTRY IS, WHO SHALL HAVE SACRIFICED PART OF HIMSELF TO HIS FARM OR COUNTRY, FOUGHT TO SAVE IT, STRUGGLED TO MAKE IT BEAUTIFUL. ONLY THEN WILL THE LOVE OF FARM OR COUNTRY FILL HIS HEART.”**

**| ANTOINE DE SAINT-EXUPERY**

Unlike most of the Limpopo area, there is no land claim on the farms involved. This means that there is no known history of people having been displaced from this farm during the Apartheid era and that the risk is minimal that the government of South Africa might purchase or nationalize the property at market prices, in order to return the property to previously disenfranchised communities in the area.

There are plenty of (artificial, some solar-powered) waterholes with plentiful drinkable water on the property, including one natural dam/wallowing hole, which has been dug larger and deeper to allow for some hippos to settle in, as well as creating wallowing spaces for rhinos, buffalos, and elephants. There is also a river from which the reserve gets its namesake, the Mapedu, running through the property on a seasonal basis. Adding a few dams to keep surface water on the reserve beyond the rainy season is not that complicated to do and is being worked upon.

The reserve is within the Mopane Bushveld classification and is covered primarily with mopane trees and bushes. The current carrying capacity of the reserve is some 2000 Grazer Units and Browser Units. As the clearing of the encroachment progresses, the carrying capacity of the reserve will increase.



The ecology report identified that the reserve falls in the Mopane Veld Type (Veld Type 15) according to Acock's classification. The woody layer (trees and shrubs) is dominated by Mopane; however, many other tree species are commonly found. There are over 30 young baobabs on the property, with the largest being about 300 years old.

There is sickle bush present, but no infestation caused by overgrazing. There are areas of Mopane encroachment and a project for thinning it out, as recommended by our ecologist, has commenced, and the results are very encouraging, with good grass growth returning. The project has been highly successful and is ongoing.

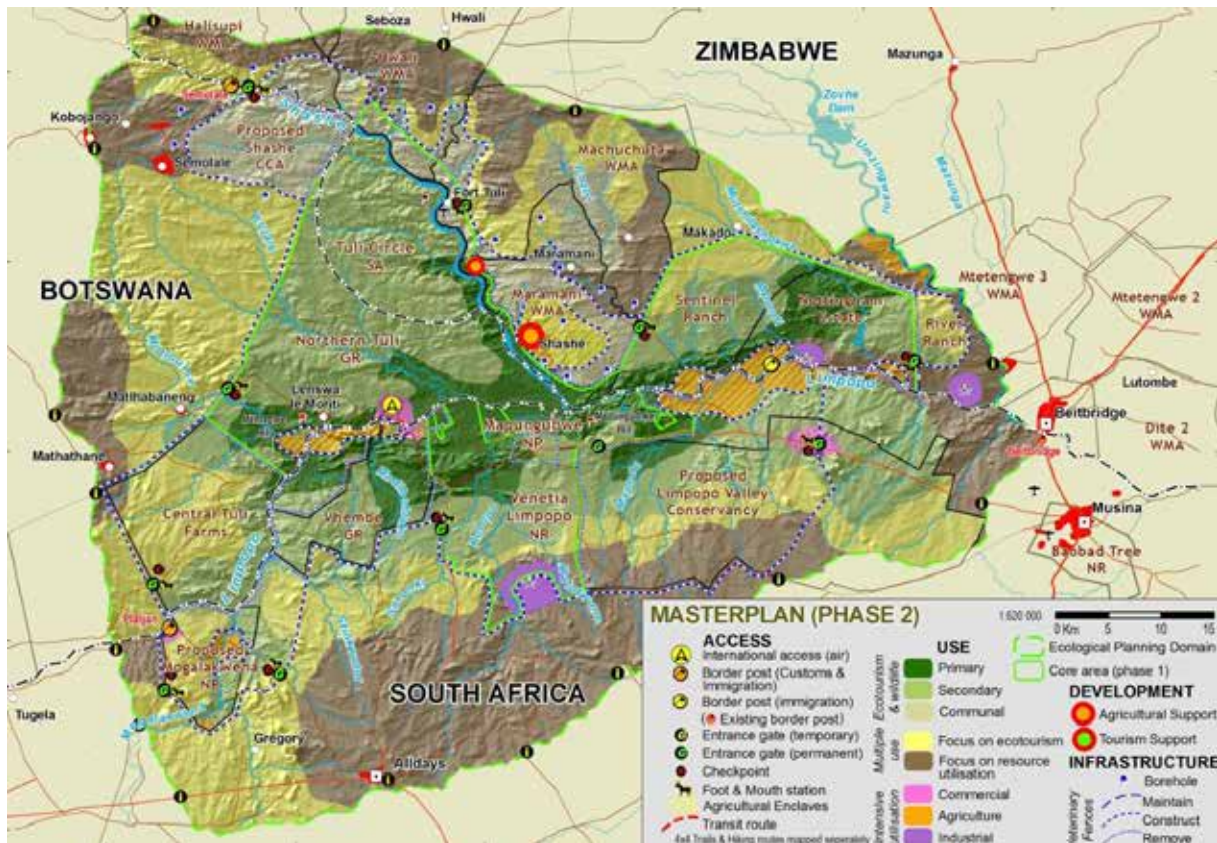
The nine-awned grass (*Enneapogon cenchroides*) dominates the herbaceous layer, while there is growing the presence of decreaser grasses such as buffalo grass (*Panicum maximum*), particularly in the extensive river drainage lines, indicating the potential for supporting significantly higher grazing in the future. The average annual rainfall is about 330mm, with the lowest experienced in 1996 being 96mm in 1997/8 and the highest about 1,300mm in 2000/01.

A study carried out by a re-introduction specialist group authorized by the secretariat of the Southern Africa Development Community (SADC) and the International Union for Conservation of Nature (IUCN) and funded by the Italian Ministry of Foreign Affairs, the Directorate General for Development Cooperation shows the advantages of the Limpopo region for re-introductions. Among the primary considerations are the ecological, demographic and genetic principles for establishing new rhino populations.

A study carried out in April of 2014 by AGES (Mr. Botha) gave a number of recommendations to increase the carrying capacity of the farm as well as ideas to reduce the one-sidedness of Mopane vegetation.











## ■ EXISTING ANIMALS ON THE RESERVE

**“I THINK I COULD TURN AND LIVE WITH THE ANIMALS. THEY ARE SO PLACID AND SELF-CONTAINED. THEY DO NOT SWEAT AND WHINE ABOUT THEIR CONDITION. NOT ONE IS DISSATISFIED. NOT ONE IS DEMENTED WITH THE MANIA OF OWNING THINGS. NOT ONE IS DISRESPECTFUL OR UNHAPPY OVER THE WORLD.”**

**| WALT WHITMAN**

There are 46 mammal species either currently on the reserve or that have been identified as having recently been on the reserve. Some of these species were introduced for game farming purposes, while others such as the kudu and impala followed naturally. Some of the predators, such as leopard, wild dog, and cheetah, are nomadic and are not always present. Lions are occasional visitors from the National Park next door. The large animals like elephants and rhinoceros were, at the time of original settlement, considered to be useless or hunted for meat and ivory/horn, and were quickly eliminated. It is great to see the giants of Africa re-take the land their predecessors had occupied for millions of years. In September 2016, we released a herd of elephants onto Mapesu; it was the first time in some 140 years that they re-claimed their original habitat.

### ACTIVITIES YOU CAN UNDERTAKE

An important objective at Mapesu is for shareholders to create and enjoy their own bush experiences, whether the experience is a safari holiday or involvement in projects.

Why would you not want to be your own game ranger? By completing the bush skills, first aid and 4x4 driving courses, you qualify to take responsibility for yourself and your guests. You can enjoy the freedom of exploring the reserve on foot or in our specially converted game-drive vehicles without a ranger and experience an unrivaled sense of adventure! Alternatively, our highly experienced rangers can share their knowledge with you on either a short sundowner drive or an extended full-day expedition into the far-flung corners of the reserve. The choice is yours.



There is also a range of relaxing activities to tempt you, from sumptuous bush dinners to spending hot afternoons reading by the cool waters of the swimming pool. An Aloe Vera spa is planned at the site of the lodge.

Those who really want to get their hands dirty can get involved in species monitoring, breeding programs, game counts, reintroduction programs, infrastructure development (design and construction work) and corporate social responsibility projects.

The concept has been designed in such way as to accommodate and encourage investors to contribute according to each individual's ability and wishes, and in doing so to make a real difference, however small, in this special area of Africa.

This capacity to leave a personal legacy is what makes Mapesu so special. Your level of personal involvement at Mapesu is entirely up to you and limited only by your imagination, desires, and energy level.

**What you can do:**

- Game drives and bush walks
- Stargazing
- Painting and photography
- Bird watching
- Viewing animals at a number of viewing hides and waterholes
- Bush dinners with friends
- Braais on a 'koppie'
- Learning about tracking, trees, game breeding and more
- Jogging and mountain biking
- Visiting nearby archaeological sites and learning about rock art
- Tracking animals on foot
- Spending time with the anti-poaching patrol, learning the tricks of the trade
- Relaxing by the pool with a good book and drink
- Business strategy sessions with colleagues/other shareholders
- Conservation and social responsibility projects
- Infrastructural projects





## ■ INITIAL PHASE: ESTABLISHMENT OF THE RESERVE, CONTINUATION OF THE LODGE

**“IT’S THE ACTION, NOT THE FRUIT OF THE ACTION, THAT’S IMPORTANT. YOU MAY NEVER KNOW WHAT RESULTS COME FROM YOUR ACTION. BUT IF YOU DO NOTHING, THERE WILL BE NO RESULT!”**

### | MOHANDAS GANDHI

During the first phase (between April and December 2014) we offered and sold 190 shares at an initial price of USD 10,000 each, out of a total of 1,000 available shares. This initial phase provided the capital to purchase the first farms, which are currently still subject to a bond to be fully repaid, spruce up the existing Mopane Bush Lodge (a four-star luxury lodge on a ridge overlooking the Mopane veld), restore internal roads, replace boundary fences (all fully electrified), restore waterholes and overall to get the reserve to the point where it can be operated in a viable and sustainable manner.

The Mopane Bush Lodge is located on the northern section of Mapesu Private Game Reserve, about 3km by gravel road from the property entrance gate. It is on a southern - facing slope, which gives the lodge a view over most of the property to the south. There are no developments in the sight line from the lodge, and at night there are no lights to be seen, providing a truly African bush experience.

The Mopane Bush Lodge is the closest, fully catered lodge to the main entrance of the adjacent Mapungubwe National Park & World Heritage Landscape, located only 7km away. Guests can go to the park for morning activities, come back to the lodge during the middle of the day to relax, and return to the park in the late afternoon. The next closest lodge is 45km away.

Mopane Bush Lodge is graded as a four-star luxury lodge by the Tourism Grading Council of South Africa. The AA grading scheme has graded it as superior in the luxury lodge classification.

The lodge offers accommodation for 42 guests in 19 thatched rondavel chalets with twin beds, air conditioning en-suite facilities and free wifi. Each chalet is secluded and has its own veranda and outdoor shower, as well as most having a small splash-pool. The lodge features a communal swimming pool, adjacent to a lapa and bar. The lapa is thatched and open on all sides and is used for sundowners and sometimes for serving meals. Next to the bar is a boma which can seat up to 24 guests around a fire, under the stars.

The lodge is located in the middle of a very special tourism area, which is still relatively unknown. The four main exclusive attractions to this area are:

- Mapungubwe UNESCO World Heritage Site
- Mapungubwe UNESCO National Park
- Confluence of the Limpopo River and Sashe rivers
- UNESCO San Rock Art Shelter





Other attractions in the area include:

- Giant baobabs, including a centuries-old 25 meters in circumference
- Birding - over 430 species in the area
- A safe environment for walking and cycling in the bush, with a guide
- Nearby crocodile farm
- Adjacent to South Africa's largest diamond mine
- Adjacent to the Tuli Block in Botswana, with beautiful lodges such as Tuli Lodge and Mashatu Lodge
- Tiger fish fishing in Shroda dam

Mopane Bush Lodge is the only fully catered accommodation in the vicinity and is listed on over 50 internet accommodation and booking sites. It is highly rated on TripAdvisor with a certificate of excellence award granted for the last 4 years consecutively. The growth market for the lodge is the international market; it has so far concentrated on Germany, the Netherlands, Belgium, and the UK. Future marketing activities will also be directed towards East Asia. Mapesu has a number of joint marketing activities with other properties in the Limpopo Province which compliment what Mopane Bush Lodge offers. It has joined three other lodges and formed the Pearls of Limpopo route in conjunction with Kololo Game Reserve, Leshiba and Madi a Thavha all in the Limpopo Province, and it offers specials in combination with Mashatu & Tuli Safari Lodge in Botswana.





## ■ SECOND PHASE: BUFFALO BREEDING

The second phase offers interested parties the opportunity to personally participate up close in the lucrative buffalo farming and breeding trade. Game farming has grown significantly in South Africa over the past decade and has become an industry with substantial economic potential. Of the various aspects of our balanced conservation plan, this part will potentially provide the greatest economic contribution to the reserve.

There is a growing demand for so-called disease-free buffalo, animals from outside the zone in which foot-and mouth disease and other bovine diseases are common. The buffalo breeding project strives to intensively propagate buffalo and to establish a large and viable genetically diverse population, from which relocation and sales can be done within the entire province and beyond, thus ensuring the future existence of this valuable and endemic species and also to act as an alternative investment tool with capital growth.

We are breeding disease-free Cape buffalo (*Syncerus Caffer*) in a controlled environment. We started with 5 cows and 2 bulls, and have produced our first few calves and want to continue to expand to roughly 20 breeding cows.

We will follow sound business and agricultural principles in taking care of our nucleus herd. Reproduction is our main aim, and therefore it is of great importance to start with the best animals, and genetic material, as this will ensure that all progeny can be sold at a premium. This project will strive to breed big-horned, big-bodied and highly fertile animals. The sex and age ratio of the buffalo to be acquired will allow for a breeding herd that will function at its optimum level.

The initial investment in acquiring the breeding herd will vary depending on the price of the stock available. The characteristics of a good breeding bull include horn length, size, and fertility.

Buffalo breeding is a profitable venture which, given the right circumstances, can be very lucrative. The herd should be able to grow quickly at an 80% calving rate.







Buffalo auction prices have increased steadily over the past 10 years. Between 2008 and 2018 there has been a roughly 100% increase in price. The demand for disease-free buffalo has been increasing every year due to new areas that are opening for the relocation of disease-free buffalo. One of the major driving forces of buffalo prices is the future opening of SADEC countries to disease-free buffalo. However, as supply moves closer towards demand, prices will tend to level out.

Buffalo are long-lived, hardy animals that are easily reared in an intensive system. Mortalities due to illness are the exception and not the rule. The breeding of disease-free buffalo lies largely in the hands of the private sector, as the Cape buffalo is still a very scarce commodity.

The buffalo will have access to water points in all the areas. In addition, natural mud and clay wallows are provided to assist in thermoregulation and external parasite control. Water points are to be plentiful to allow non-dominant animals regular access to water and wallowing. Water points consist of natural clay or earth dams.

Our shareholders are invited to participate hands-on in any aspect of the breeding program.

The buffalos will, together with the elephants, the rhinos and the plentiful leopards and occasional lions, turn Mapesu into a Big Five reserve.











## ■ THIRD PHASE: SAVING THE RHINOS

The third phase includes the construction of a rhino orphanage, as well as a temporary holding pen.

### **RHINO S.O.S (SAVE OR SIRE)**

For people who are concerned about survivability, Mapesu will provide a safe place for the species. It will also allow farmers who own rhinos but can no longer safely take care of them on their own property, a location to preserve them.

The project has a fenced-off zone for rhinoceros to be introduced to the reserve and for closer monitoring when needed. The entire area is fenced in and guarded by an anti-poaching unit with excellent training and tools at their disposal.

A qualified veterinarian is on standby in the event of illness or injury. Lucerne and other feed, as well as minerals, will be provided when needed.

Understanding how hard it may be for animal lovers to part with their rhinos, we offer a relatively safe way for someone to own a rhino and really feel connected to the conservation of the species. All adoptive owners will have visitor's rights and will be kept up to date on the development of the project as well as their rhinos (newsletters, website, web cameras, drones, etc.)

By increasing the number of owners and rhinos, the shared cost will be reduced, and optimum protection can be organized. More funds mean more anti-poachers, better weapons, better technology, and better veterinary care among others.

The location of the farm, the presence of predators and buffaloes, as well as the intense human activity, can be a deterrent for poachers; nevertheless, poaching is a real and present danger and needs to be accepted for what it is. Investors will need to realize that loss of life for both rhinos and humans is a possibility.





## ■ ADDITIONAL PLANS

Breeding rhinos and protecting them from poaching is expensive. The intention is, therefore, to integrate the rhino project with a number of commercial activities to assure that after the initial start-up phase the project will become self-sustainable as well as profitable.

Some of the plans:

- We are interested in setting up a park ranger training center and an anti-poaching unit training center. Both will be addressed in phase three or four of the project
- There is space at Mapesu to create internships for veterinarians, where foreign vets can come and hone their skills with larger animals
- Companies often have plans for corporate social responsibility projects (CSR) but lack the focus, the manpower or the management attention span to realize them. At Mapesu we can create tailor-made CSR projects in which the sponsoring companies can add as much or as little of their own effort as they wish, going as far as renting a CSR project

### **VOLUNTEER PROGRAM**

Mapesu runs a volunteer program, allowing people globally to enjoy working with animals in the African nature and on projects that make a difference. Special adapted accommodation has been created for short and long-term residing volunteers.







## ■ THE SHARED UNIVERSE FOUNDATION



### Shared Universe Foundation

In addition to Shared Universe Ventures Ltd, we have created a South African registered not-for-profit Foundation by the name of Shared Universe Foundation (the “Foundation”) as well as affiliated charities in both The Netherlands (Stichting Shared Universe) and The UK (Shared Universe Foundation Registered Charity No 1169963).

The Vision of the Foundation includes the advancing of research, education, and conservation regarding Rhinoceros and other endangered species, along with the provision of strategic support for biodiversity conservation programs and projects.

The emphasis will be on protection and conservation of rhinoceros and other endangered species as well as increasing conservation awareness among the people of South Africa and abroad.

The principal objects of the Foundation are:

- The protection and conservation of rhinoceros and other endangered species in South Africa;
- Research and education regarding rhinoceros and other endangered species in South Africa; and
- Maintenance of the Shared Universe Conservation Fund into which donations from corporations and private individuals will be received, and from which the Trust’s expenses and investments will be paid.

- The ancillary objects of the Foundation are to:
- Maintain a high standard of biodiversity conservation;
- Promote sustainable use of wildlife resources;
- Maintain the integrity of conservation areas both within and outside formal protected areas, in terms of biodiversity and cultural heritage;
- Support conservation-based community development projects;
- Foster increased conservation awareness among the people of Southern Africa;
- Render services to the cause of biodiversity conservation and conservationists with the objective of enhancing the standards of biodiversity conservation best practice;
- Support and facilitate conservation, rehabilitation or protection of the natural environment, including flora, fauna and the biosphere; and
- Provide facilities for the study and enjoyment of biodiversity conservation for the benefit of the general public.

The Foundation will not undertake any commercial operations and will be operated separately from Shared Universe’s commercial activities. Nevertheless Shared Universe has undertaken to promote the Foundation’s purposes as much as it can, as well as support it with administrative and other forms of support. Donors and sponsors can either donate funds, contribute to their efforts that are useful to the Foundation, or financially adopt a specific project or animal.

Large sponsors and donors will be commemorated on a “wall of honor” or by attaching their (corporate) name to a facility or similar (subject to approval by the board of trustees).

The trust will not incur any debts and will expand only in as far as funds permit.

[www.shareduniversefoundation.org](http://www.shareduniversefoundation.org)  
[www.shareduniverse.nl](http://www.shareduniverse.nl)  
[www.shareduniverse.co.uk](http://www.shareduniverse.co.uk)









## ■ STRUCTURE OF THE PROJECT: INVESTMENT FUND

The project has been set up as an investment fund, Shared Universe Ventures Ltd. (the “Fund”).

Fund shares are offered to the public, and all investors who have successfully passed the Fund’s Know Your Customer requirements can participate on an equal basis.

A South African company, Mapesu Private Game Reserve (Pty) Ltd., has been incorporated; this company operates the conservancy and the various sources of business.

Shares are currently offered at USD 10,000. The target amount raised in the first phase was about USD 3,000,000 to purchase the farm; to make it suitable to work and live on and to get the previously mentioned projects started a further USD 2 million was needed. In the second, third and additional phases a further USD 3,000,000 to 5,000,000 will need to be raised to make the necessary investments in animals, upgrading and expanding the lodge, as well as pay for operating expenses until the project becomes self-sufficient and profitable.

At least once a year the share value will be re-calculated based on audited financial reports; purchases and sales of shares will be conducted at the new price. Additional shares, financing further growth, will be issued at the revalued price. The Fund and the underlying company Mapesu will both be audited.

### SHAREHOLDER COMPENSATION

All shareholders get to enjoy the beauty and excitement of Mapesu on their terms and as often as they like. In return, every share carries the following characteristics:

- All shareholders get to enjoy the beauty and excitement of Mapesu on their terms and as often as they like. In return, every share carries the following characteristics:
- Each shareholder must nominate a natural person to be the Ultimate Beneficial User (UBU)
- Different from other developments of this nature, shareholders will not be subject to an annual operating levy
- Shareholders are entitled to one free night a year per share for accommodation and a 50% discount for additional nights and pay normal fees for consumables such as game-drive vehicle use. These discounts are agreed upon every year by the shareholders at the annual general meeting
- All shareholders will be mentioned with their names and pictures on a wall of honor, for all who have contributed to the effort to save the rhino
- Preferential access rights can be freely exchanged with those at Alpasi3n Lodge, a wine estate in Mendoza, Argentina
- All shareholders will have their say at the annual shareholders’ meeting and thus a say as to how the rhino rescue efforts will be conducted
- Cash dividends should not be expected to be paid within the next five years, but once the game breeding projects come to fruition, there might be an attractive annual return on investment (although no guarantees can and will be given). Moreover, capital gains on the investment could be realized over time
- Mapesu has a freehold title-deed ownership; the land is not leased, and it is not subject to any land claims
- This is not a time-share or share-block model, but true and honest ownership
- Shared Universe Ventures Ltd is not a liquid investment
- This investment offers a good price/value for money; nobody is making a profit off the investors. It is a shared effort, whereby a lot of effort is made without compensation by the shareholders
- Shareholders may feel a sense of belonging, a sense of ownership – a bush home away from home
- The reserve is remote and yet quite easily accessible from Johannesburg
- Membership in a like-minded community, one is bound to make friends for life
- Privacy. The project is not open to mass tourism; day visitors will only be allowed in a limited area
- Self-drive game drives/walks and sense of involvement on your own terms. Doing something productive for the community, nature and endangered species

All shareholders have the following rights:

- Full use of the reserve and all communal facilities for the UBU and/or the UBU's partner/spouse and guests
- To visit as often as desired. Shareholder accommodation is booked on a first-come, first-served basis and is subject to availability. We reserve the right to limit bookings of communal accommodations to two weeks at any one time
- To enjoy all activities listed in this document, and to participate in game breeding, conservancy and research projects going on at the time of visit
- To self-drive, subject to the successful conclusion of the bush skills, first aid, and 4x4 driving courses
- Holders of ten or more shares (Elephant category) are entitled to use their own game-drive vehicle, subject to the vehicle being approved by reserve management

### SHAREHOLDER CATEGORIES

We have three shareholder categories, as follows:

#### **Buffalo (1 SHARE)**

Buffalo shareholders can enjoy the reserve and its communal facilities at reduced fees for accommodation.

#### **Elephant (10 SHARES or more)**

Elephant shareholders can own personal standardized units within a facility with other shareholders, on a selected site within the reserve. Some of the conditions relating to accommodation bookings and maximum length of stay do not apply or are relaxed for elephant shareholders. Contact us for further information.

#### **Rhinoceros (25 SHARES or more)**

Rhinoceros shareholders can build their own accommodation on agreed upon prestigious private sites within the reserve. The conditions relating to accommodation bookings, and maximum length of stay does not apply to Rhinoceros shareholders, except for those relating to government regulations. Contact us for further information.

**The main aim of Shared Universe is to enable visitors, as well as shareholders, and their guests to create and enjoy their own African wildlife experience.**



It is possible, as well as our intent, to make the project economically viable within a limited time frame (depending mostly on how quickly we can expand the lodge and how many bed-nights we are able to sell). Given the nature of the project, investors should not look at it as solely a financial investment (there may be projects around with higher yields and less risk). The intangible dividends and pleasures of interacting with nature and being part of an effort to save the rhino and other endangered species from extinction must not be underestimated. Take a minute to think back and recall the moments that have given you the biggest satisfaction, and you will soon realize that what makes us really happy are the things we do to bring happiness to others, contributing to the greater good, leaving a legacy, and helping those in need. There is no greater satisfaction.

**“WE CAN JUDGE THE HEART OF A MAN BY HIS TREATMENT OF ANIMALS.”**

**| IMMANUEL KANT**

### **QUEST FOR MORE SHAREHOLDERS**

The sale of shares will need to provide the capital to complete the additional (communal) lodges, the rhino hotel, improve staff facilities, purchase more vehicles and other capital equipment, settle the bond/loan for the benefit of the previous owners of the reserve and create a cash reserve.

By early 2018 the Fund has raised USD 4.5 million and will, in addition, need to raise up to USD 5 million to carry out the plans mentioned above and to make the necessary investments, take care of the farm, its people and animals over the coming five years.

Further amounts may need to be raised in the future, subject to shareholder approval.

**DATE OF THIS PROSPECTUS: February 2018**





## ■ MANAGEMENT STRUCTURE

**“THE BOND AND KINSHIP WHICH INDISSOLUBLY EXISTS BETWEEN ALL LIVING BEINGS REQUIRES ESPECIALLY ON OUR PART A DEEP INVOLVEMENT IN THEIR WELFARE. THE INDIFFERENCE, CALLOUSNESS, AND CONTEMPT THAT SO MANY PEOPLE EXHIBIT TOWARD ANIMALS IS EVIL, FIRST, BECAUSE IT RESULTS IN GREAT SUFFERING IN ANIMALS AND, SECOND, BECAUSE IT RESULTS IN AN INCALCULABLY GREAT IMPOVERISHMENT OF THE HUMAN SPIRIT.”**

### **| ASHLEY MONTAGU (ANTHROPOLOGIST/SOCIAL BIOLOGIST)**

The Fund has a Board appointed by the shareholders for two-year periods. The Board will appoint a Project Manager to conduct the day-to-day management of the Fund and the conservancy.

The Board will also enter into agreement with various contractors and sub-contractors to execute potential parts of the project, at arm's length conditions in a fully transparent process, benefiting both the endangered species on the farm and the shareholders in the Fund.

The results of the company will be audited once a year and shared with all investors.

The Board of Shared Universe, the Fund, currently consists of:

#### **QUINTEN KNIPPING**



#### **MARGARET SANKATSING**



The Board of Mapesu Private Game Reserve Pty Ltd currently consist of:

#### **QUINTEN KNIPPING | PIET VILJOEN**

Experts will be hired or contracted to carry out specialized tasks related to the anti-poaching and veterinary aspects. Several sub-projects, like the development of residences, may be outsourced in part or entirely.





## EMPLOYMENT

Projects this size over time will require a lot of manpower. The current staff of around 50 employees will be gradually increased to take on greater responsibilities and handle attractions at the park. Staff numbers will, however, be kept in line with the financial opportunities of the project so that we can avoid future retrenchments. It is estimated that staff will eventually number about 100 people.

Training will be set up to ensure we can work as much as possible with staff from the region and earn valuable Black Economic Empowerment (BEE) points. As an equal opportunity employer, we will strive to have a fair representation of different sexes, races, and cultures at the various levels of the organization.

## STRENGTHS

- One of the largest private farms in the area at 7,221ha (with opportunities for further growth)
- 6km from the Limpopo River
- Fully game-fenced, excellent road network, waterholes, 'koppies' for viewing, and viewing hides
- A luxury 19-chalet lodge
- Very low development and vehicle density, no mass tourism
- Ownership by means of freehold title, no claims on the land and buildings
- Mining nearby highly unlikely due to low-quality coal deposits
- Flexible shareholder mode, with a strong sense of involvement and ownership
- Like-minded shareholder community
- DIY or guided game drives and bush activities - your choice
- Mostly very limited access. Activities for the public contained in a limited area, not catered to crowds
- Remote, yet easily accessible by road and air
- Abundance of wildlife, habitats, adjacent to truly spectacular historical sites and spectacular scenery
- US dollar investment
- Location in South Africa, one of the BRICS, a relatively well-developed country
- Long-term strategy with quadruple bottom-line investment - profit, potential, people, planet
- Well priced to make a jump start



## ■ OVERALL RISKS

**“AND THERE COMES A TIME WHEN ONE MUST TAKE A POSITION THAT IS NEITHER SAFE, NOR POLITICAL, NOR POPULAR, BUT HE MUST TAKE IT BECAUSE HIS CONSCIENCE TELLS HIM THAT IT IS RIGHT.”**

**| MARTIN LUTHER KING**

In a project of this magnitude there are several risks for the investor:

- The most obviously present risk is that of poaching. Poaching is rampant in South Africa; rhinos may get killed, and people may get hurt in the process. This is a clear and present danger and should not be underestimated.
- There is the (small) risk the project at some stage in the future may get nationalized.
- There is the risk that an insufficient number of tourists will come and visit to make the project economically feasible in the long run.
- The tourism industry in South Africa may stop to grow if social injustice is not controlled or if tensions present in society become more outwardly present.
- The South African Rand has devalued considerably over the years, and the economy of the country is not as strong as it could be. This will negatively affect the value of the shares in the project.
- There is the risk that interest in the continued efforts to save the rhinos may dwindle and thus the interest in investing in it will decrease.
- The biggest risk is to do nothing and see rhinos and other endangered species become extinct.

### TRUE QUADRUPLE BOTTOM LINE INVESTMENT

Sustainability and responsibility are often-quoted bywords in business today, yet at Mapesu they are an integral part of what we do. To be truly sustainable we have to attend to all four legs of the quadruple bottom line: profit, progress, people, and planet.

By their very nature, the rehabilitation of land, preservation of clean water and conservation of biodiversity cater to the needs of the planet. Moreover, our investment will only grow in value, as Mapesu meets its objective of becoming a world-class game reserve, leading to profit for shareholders and personal development of the capabilities and skills of its workers and managers. However, our relationship with our neighbors and surrounding communities - the people - is also a critical part of true sustainability.

## JOIN US NOW

Our vision for Mapesu is to create a world-class game reserve from converted farmland. The result will be a growing area in the wild that supports natural processes once more and an exemplary legacy for future generations.

We focus on a superior owner experience while at the same time providing education, jobs and other opportunities for neighboring communities and preserving our wilderness area through ecosystem and biodiversity conservation, including the reintroduction of endangered species. As a secondary benefit, our investment grows in value as the reserve grows in stature.

In our model of game reserve ownership, our shareholders get involved at their discretion and based on their individual ability. Keen conservationists, safari lovers and wildlife enthusiasts, as well as farmers, game breeders and other people who care for our nature can leave a personal legacy for generations to come. It will also create wealth and provide enormous immediate satisfaction and enjoyment.



## ■ CONTACT US



### WEBSITE

[www.shareduniverseafrica.com](http://www.shareduniverseafrica.com)

### FACEBOOK

[www.facebook.com/shareduniverseafrica](http://www.facebook.com/shareduniverseafrica)

### E-MAIL

[contact@shareduniverseafrica.com](mailto:contact@shareduniverseafrica.com)

### TELEPHONE

+27 (0)71 900 3939

**SHARED UNIVERSE VENTURES LTD.**  
Pareraweg 45, Curaçao.













PRINTED ON  
ENVIRONMENTALLY FRIENDLY PAPER